



Indian Institute of Management Rohtak

IIM-Rohtak Sports Aptitude Assessment

(Sample Test)

Note: There will be negative marking for the exam. One mark will be awarded for each right answer and 0.25 marks will be deducted for each wrong answer.

Quantitative Aptitude

Q1 If a number $573xy$ is divisible by 90, then what is the value of $x+y$?

- a) 6
- b) 9
- c) 3
- d) 8

Q2 A number consists of two digits. The digit in the tens place exceeds the digit in the units place by 4. The sum of the digit is $\frac{1}{7}$ of the number. The number is

- a) 27
- b) 72
- c) 48
- d) 84

Q3 A data set of n observations has mean $2x$ while another data set of $2n$ observations has mean x . Then the mean of the combined data set of $3n$ observations will be

- a) x
- b) $\frac{3}{2}x$
- c) $\frac{2}{3}x$
- d) $\frac{4}{3}x$

Q4 The mean age of a class is 16 years. If the class teacher aged 40 years old is also included, the mean age increases to 17 years. The number of the students in class is

- a) 23
- b) 33
- c) 44
- d) 16

Q5 If $x + \frac{1}{x} = 5$ then $x^2 + \frac{1}{x^2} =$

- a) 25
- b) 27
- c) 23
- d) $25 \frac{1}{25}$

Verbal Ability

Q.1 'Red Letter Day' means:

- a) A dangerous day
- b) A rosy day
- c) An important day
- d) A bloody day

Q.2 The plural form of 'alumnus' is

- a) Alumnuses
- b) Alumna
- c) Alumnae
- d) Alumni

Q.3 The suitable prefix for the word "bitter" is

- a) im
- b) in
- c) un
- d) em

Q.4 Select the word that is similar in meaning to the underlined word.

The requisite energy is derived from the battery.

- a) Insignificant
- b) Necessary
- c) Different
- d) Special

Q.5 The adjective form of boast is

- a) Boastful
- b) Beastly
- c) Boasty
- d) Boastile

Logical Reasoning

Q 1 Find the odd one out

- a) Microscope
- b) Telescope
- c) Periscope
- d) stethoscope

Q 2 A man faces towards north. Turning to his right, he walks 25 metres. He then turns to his left and walks 30 metres. Next, he moves 25 metres to his right. He then turns to his right again and walks 55 metres. Finally, he turns to the right and moves 40 metres. In which direction is he from his starting point ?

- a) South-West
- b) South
- c) North-west
- d) South-East

Q 3 In a lake, there are 10 steps labelled using alphabets from A to J. Starting from step A, every minute a frog jumps to the 4th step from where it started - that is from the step A it would go to the step E and from E it would go to the step I and from I it would go to C etc. Where would the frog be at the 60th minute if it starts at the step A ?

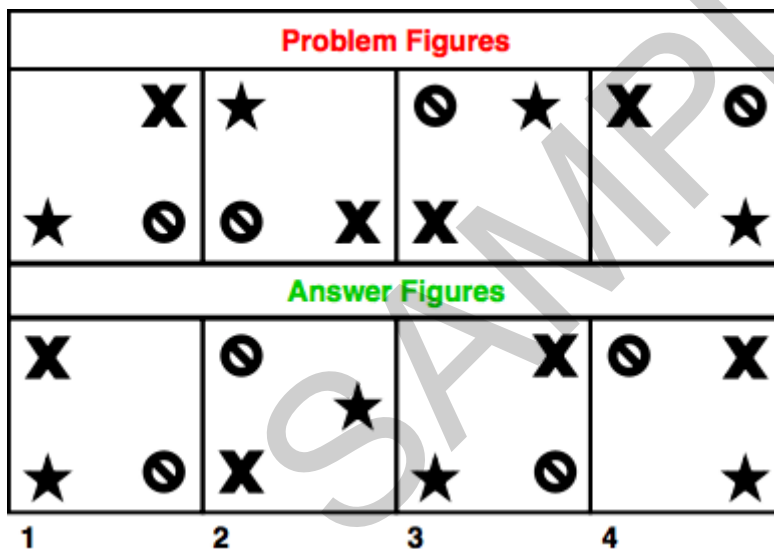
- a) B
- b) A
- c) H
- d) D
- e) E

Q 4 At what time between 4 and 4.59 will the hands of a watch point in opposite directions?

- a) 45 min. past 4
- b) 40 min. past 4
- c) 50 (4/11) min. past 4
- d) 54 (6/11) past 4

Q 5 The following question consists of some Problem Figures followed by other figures marked 1, 2, 3, 4 called the Answer Figures.

Find out the correct answer figure that should come next in the sequence of problem figures.



- a) 1
- b) 2
- c) 3
- d) 4

Sports Aptitude

Question 1: Who was the first Indian to win an individual medal in Olympics?

- (a) Milkha Singh
- (b) P.T.Usha
- (c) Karnam Malleshwari
- (d) K.D.Jadhav

Question 2: In cricket, who has scored the most Test hundreds ever?

- (a) Steve Waugh
- (b) Sachin Tendulkar
- (c) Shane Warne
- (d) Sunil Gavaskar

Question 3: In what sport would one find an Albion round?

- (a) Swimming
- (b) Archery
- (c) Chess
- (d) Snooker

Question 4: In tennis, what follows a deuce?

- (a) Love
- (b) Advantage
- (c) Tie
- (d) Foul

Question 5: In which country was golf invented?

- (a) India
- (b) Britain
- (c) USA
- (d) Scotland

SAMPLE